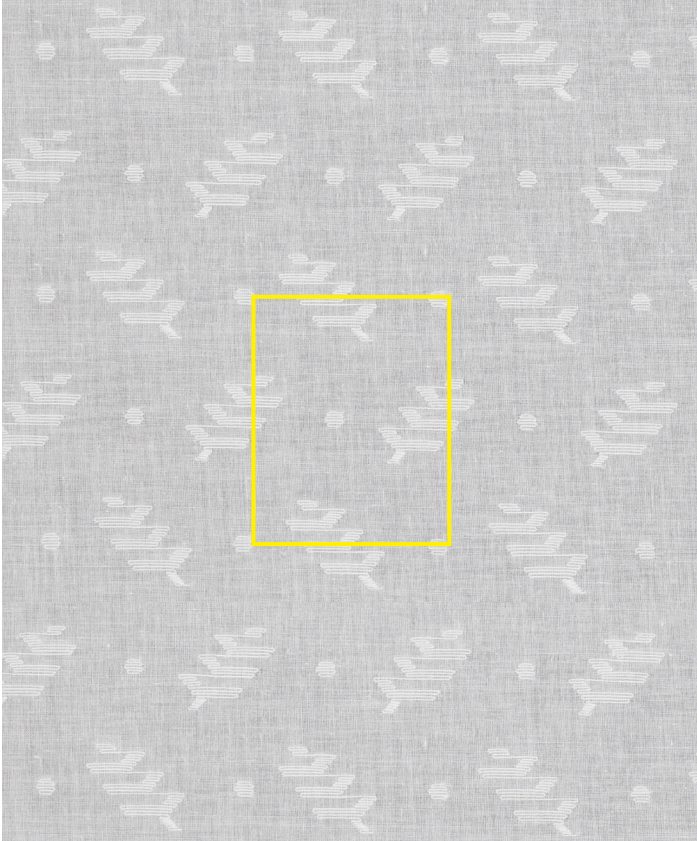


# n a m a y s a m a y

## Shilpi White | JSH-03-N

Jamdani is an intricate traditional hand weaving technique from Bengal, where motifs are produced by supplementary weft threads inlaid during the weaving process in the muslin cloth. Based on a mid 19th Century original.



<b>Design</b>	Shilpi
<b>Colour</b>	White
<b>Code</b>	JSH-03-N
<b>Composition</b>	100% Cotton
<b>Width</b>	120cm / 47in
<b>Repeat</b>	12cm (h) 20cm (v) 4.75in (h) 8in (v)
<b>Weight</b>	37.5g/sqm
<b>Notes</b>	..... ..... ..... .....



Shilpi White | JSH-03-N

[www.namaysamay.com](http://www.namaysamay.com)

